



## SWITCHED PDU SERIES



### Key Features

> **Power Monitor;**  
Total Power Monitoring

> **Protocols;**  
Http, Https, SNMP,  
DHCP, UDP

> **Outlet Control;**  
Individual, Group,  
Schedule, Auto Ping

> **Power Delay;**  
Power On/Off  
Sequence can be  
Defined

> **Alarm Thresholds;**  
User-Defined Alarm  
Thresholds for Warning  
and Overload

> **Event Alerts;**  
Email, Trap, Audible  
Alarm

> **Temp/Humidity;**  
Option Accessory

> **Approvals;**



**TRiPower Switched PDU Series** is an intelligent PDU solution that combines remote configuration and management with power distribution, and environmental monitoring.

With **TRiPower Switched PDU Series** you can:

- Reboot server with one command
- Receive SNMP alerts when power or environmental conditions exceed thresholds
- Allocate users specific access rights to selected outlets or groups
- Obtain detailed power information to get better uptime and productivity, improve capacity planning through power consumption information for both the PDU and individual port

Information provided by the **TRiPower Switched PDU** is displayed at the strip via Digital True RMS Current Meter LED display, and remotely via a Web browser.

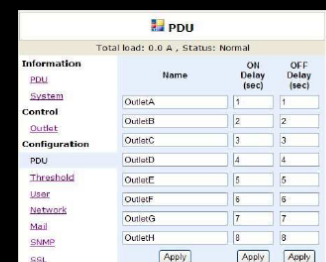
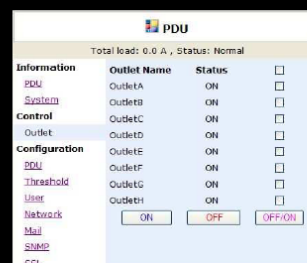
**TRiPower Switched PDU** products give the necessary flexibility for all datacenters, comms rooms and remote sites; and protocols such as: HTTP, HTTPS, SNMP, DHCP, UDP.

**TRiPower Switched PDU** offers secure access with SSL encryption and strong passwords.

**TRiPower Switched PDU** comes with FREE OF CHARGE **TRiPower PDU Management Software**. This gives managers of datacenters the capacity to manage a large installation of **TRiPower PDU** from one single (web) interface.



TRiPower PDU Switched Series	Description
TRIP-SWH-16A-02	Rack PDU 1U 16A 230V IEC320 C20 Inlet (2)C13 Outlets
TRIP-SWH-16A-08	Rack PDU 1U 16A 230V IEC320 C20 Inlet (8) C13 Outlets
TRIP-SWH-16A-08cl	Rack PDU 1U 16A 230V IEC320 C20 Inlet (8) C13 Outlets with clamp
TRIP-SWH-16A-08F	Rack PDU 1U 16A 230V IEC320 C20 Inlet, (8) Type F Schuko outlets
TRIP-SWV-16A-16	Rack PDU 0U 16A 230V IEC320 C20 Inlet, (14)C13 (2) C19 Outlets
TRIP-SWV-16A-24	Rack PDU 0U 16A 230V IEC320 C20 Inlet, (21)C13 (3)C19 Outlets
TRIP-SWV-32A-16	Rack PDU 0U 32A 230V IEC309 Inlet, (14)C13 (2)C19 Outlets
TRIP-SWV-32A-24	Rack PDU 0U 32A 230V IEC309 Inlet, (21)C13 (3)C19 Outlets
TRIP-SW3Ph-16A-24	Rack PDU 0U 16A 400V IEC309 Inlet, (21)C13 (3)C19 Outlets
TRIP-SW3Ph-32A-24	Rack PDU 0U 32A 400V IEC309 Inlet, (18)C13 (6)C19 Outlets



FEATURES	
Current Meter	Digital True RMS Current Meter
Power Monitoring	Remote Total Power Monitoring by Meter, Web, SNMP Free TRiP PDU Management Software
Protocols	Http, Https, SNMP, DHCP,UDP
Outlet Control	Individual Outlet Control
Power Delay	Power on/off Sequence can be Defined
Alarm Thresholds	User-Defined Alarm Thresholds for Warning and Overload
Event Alert	Email, Trap, Audible Alarm
GENERAL SPECIFICATION	
Output	IEC320 C13 / IEC320 C20 / Type F Schuko / Upon request
Input	IEC320 C19
Protection	1 Circuit Breaker per phase / 1 Circuit breaker per 16amp
COMMUNICATION	
SSL Indication	(1) Yellow LED
DHCP Indication	(1) Green LED
Output Status	(2,8,16,24) Green LED
Network	(1) RJ45 for Ethernet
Current Meter	3 Digits Seven Segments for True RMS Meter Range: 0A ~ 20 A Resolution: 0.1A Precision: +/-2%/+/-0.1AMP
OPERATION	
Nominal Voltage	230V / 400V
Voltage	200V~240 / 400V full range
Frequency	50/60HZ full range
Max.Output Current	10,16,32Amp(UL derated 12Amp)
Temperature	0~40 Celsius degree
Humidity	0~90%
Size	90 x 432 x 44 mm 44 x 755 x 56 mm 56 x 1778 x 44 mm 56 x 1245 x 44 mm
Weight	2,3,4,7 kg
Regulatory Approvals	UL 60950-1, UL Listed, CSA, cUL Listed, CB by UL CE, EN 55022 Class A, EN 55024,EN 61000-3-2,EN 61000-3-3 C-Tick AS/NZS CISPR 22: 2006



## Contact Details

PDU Expert Europe b.v. is a global leader in power management solutions for datacenter. Strong branding, regional sales offices, local support and competitive pricing makes PDU Expert Europe b.v. the most reliable and flexible partner to deal with.

**PDU Expert Europe b.v.**  
Koningsweg 2 unit 28  
3762EC SOEST  
The Netherlands  
0031 8787 6517 6  
[info@pduexpert.com](mailto:info@pduexpert.com)

**PDU Expert DACH GmbH**  
Gaisberg 1  
84424 Isen  
Deutschland  
0049 8083 5489 270  
[dach@pduexpert.com](mailto:dach@pduexpert.com)

**Comms Buyer Network**  
Thistleton Road Industrial Estate  
Market Overton  
Rutland LE15 7PP  
01572 768333  
[sales@commsbuyer.com](mailto:sales@commsbuyer.com)