

Per Outlet Monitored PDU SERIES



Key Features

> **Power Monitor;**
Per Outlet Power Monitoring and Total Control Load by Web

> **Protocols;**
Http, Https, SNMP, DHCP, UDP

> **Outlet Control;**
Individual, Group, Schedule, Auto Ping

> **Power Delay;**
Power On/Off Sequence can be Defined

> **Alarm Thresholds;**
User-Defined Alarm Thresholds for Warning and Overload

> **Event Alerts;**
Email, Trap, Audible Alarm

> **Temp/Humidity;**
Option Accessory

> **Approvals;**



TRiPower Per Outlet Monitored PDU (POM) Series is an intelligent power management solution that helps administrator to improve efficiency and maintains their competitive advantage in the data center and comms room.

We offer IT or data center managers solutions that helps to monitor, trace and handle servers and IT equipments.

TRiPower POM Series (Per Outlet Monitored) provides:

- Remote per Outlet power monitoring and total Control Load by Web
- Remote PDU level and per port power on/off
- Reboot server with one command
- Individual, Group, Schedule, Auto Ping
- Receive SNMP alerts when power or environmental conditions exceed thresholds
- Allocate users specific access rights to selected outlets or groups
- Temperature and humidity monitoring

Information given by the **TRiPower POM PDU Series** is displayed at the strip via Digital True RMS Current Meter LED display, and remotely via a Web browser.

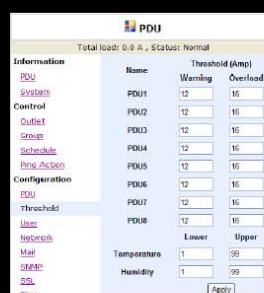
TRiPower POM PDU Series products give the necessary flexibility for all datacenters, comms rooms and remote sites; and protocols such as: HTTP, HTTPS, SNMP, DHCP, UDP.

TRiPower POM PDU Series offers secure access with SSL encryption and strong passwords.

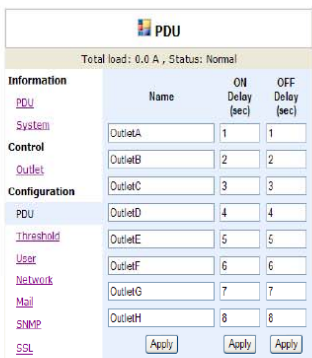
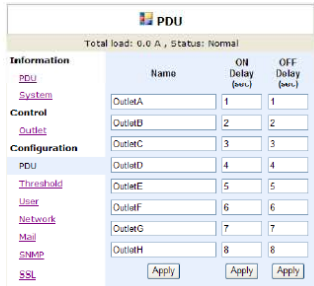
TRiPower POM PDU Series comes with **FREE OF CHARGE TRiPower PDU Management Software**. This gives managers of datacenters the capacity to manage a large installation of **TRiPower PDU** from one single (web) interface.



TRiPower PDU POM Series	Description
TRIP-POM-16A-08	Rack PDU 1U 16A 230V IEC C20 Inlet, (8) IEC C13 Outlets
TRIP-POM-16A-08F	Rack PDU 1U 16A 230V IEC C20 Inlet, (8) Type F Schuko Outlets
TRIP-ENV	Combined Temperature and Humidity Probe



PDU					
Total load: 0.0 A, Status: Normal					
Information	Ping	Response	Outlet	Action	Active
PDU	IP Address	10 minutes			
19.168.23.206	0	Outlets	OFF		
19.168.23.201	0	Outlets	OFF		
19.168.23.202	0	Outlets	OFF		
19.168.23.203	0	Outlets	OFF		
19.168.23.204	0	Outlets	OFF		
19.168.23.205	0	Outlets	OFF		
19.168.23.206	0	Outlets	OFF		
19.168.23.207	0	Outlets	OFF		



FEATURES	
Current Meter	Digital True RMS Current Meter
Power Monitoring	Remote Total Power Monitoring by Meter, Web, SNMP Per Port Monitoring Free TRiP PDU Management Software
Protocols	Http, Https, SNMP, DHCP,UDP
Outlet Control	Individual, Group, Schedule, Auto Ping
Power Delay	Power on/off Sequence can be Defined
Alarm Thresholds	User-Defined Alarm Thresholds for Warning and Overload
Event Alert	Email, Trap, Audible Alarm
Temp./Humidity	Option Accessory
GENERAL SPECIFICATION	
Output	(8) IEC320 C13 / Type F-Schuko / Upon request
Input	(1) IEC320 C20 Inlet
Protection	(1)Circuit Breaker (16A)
COMMUNICATION	
SSL Indication	(1) Yellow LED
DHCP Indication	(1) Green LED
Output Status	(8) Green LED
Circuit Status	(8) Red Led
Network	(1) RJ45 for Ethernet
Temp./Humidity	(1) RJ11 for ENV probe connection
PDU ID	1Digits Seven Segments for PDU Identification
Current Meter	3 Digits Seven Segments for True RMS Meter Range: 0A ~ 20 A Resolution: 0.1A Precision: +/-2%+/-0.1AMP
OPERATION	
Nominal Voltage	230V
Voltage	200V~240 full range
Frequency	50/60HZ full range
Max.Output Current	16Amp
Temperature	0~40 Celsius degree
Humidity	0~90%
Size	160 x 432 x 44 mm
Weight	3kg
Regulatory Approvals	CE, EN 55022 Class A, EN 55024,EN 61000-3-2,EN 61000-3-3

Contact Details

PDU Expert Europe b.v. is a global leader in power management solutions for datacenter. Strong branding, regional sales offices, local support and competitive pricing makes PDU Expert Europe b.v. the most reliable and flexible partner to deal with.

PDU Expert Europe b.v.
Koningsweg 2 unit 28
3762EC SOEST
The Netherlands
0031 8787 6517 6
info@pduexpert.com

PDU Expert DACH GmbH
Gaisberg 1
84424 Isen
Deutschland
0049 8083 5489 270
dach@pduexpert.com

Comms Buyer Network
Thistleton Road Industrial Estate
Market Overton
Rutland LE15 7PP
01572 768333
sales@commsbuyer.com